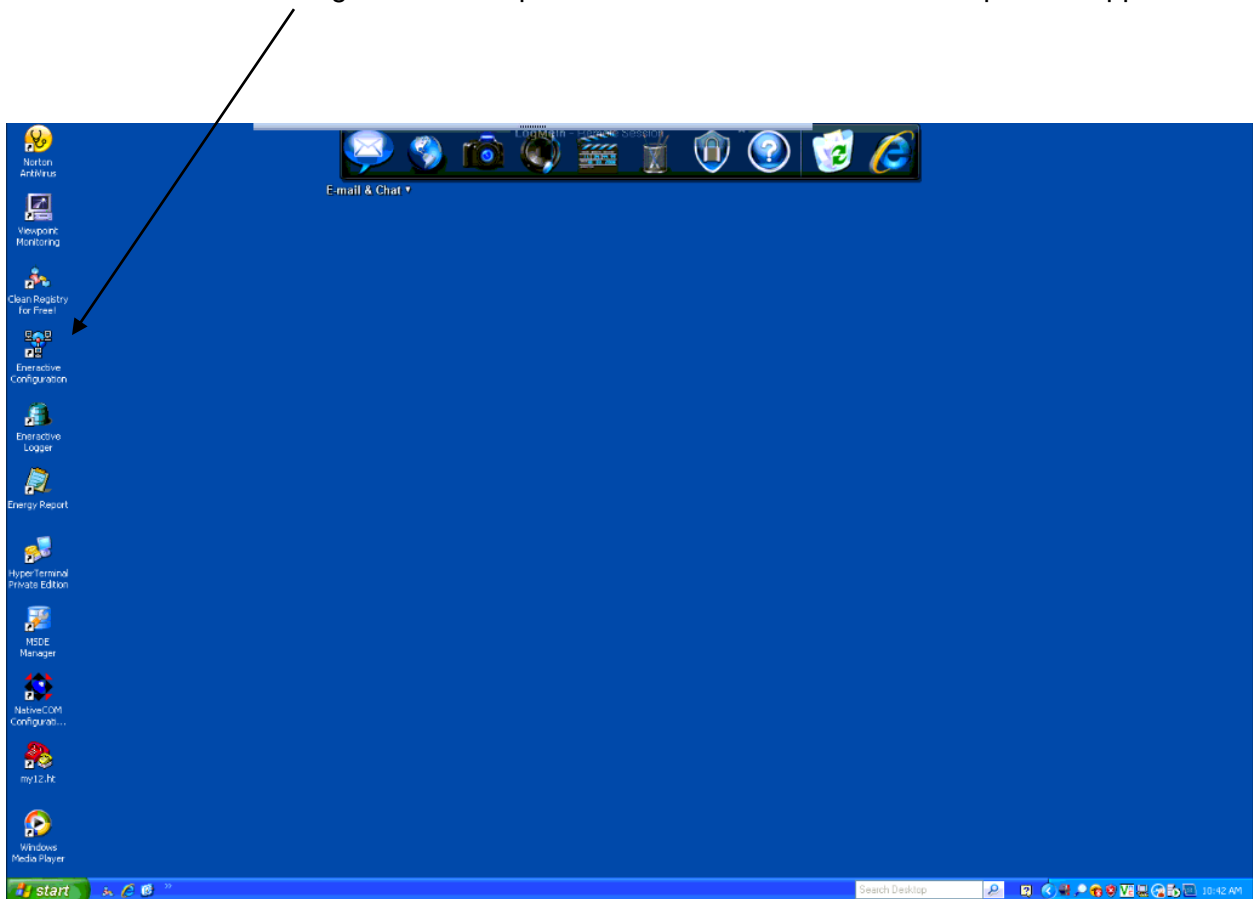


Eneractive Configurator Label Changing

This document will provide the end user with the technical knowledge to change the label within the Eneractive Configurator Software. This document will be broken down in steps for easy navigation through the Eneractive Configurator application.

Step 1: Locating the Eneractive Configurator Icon

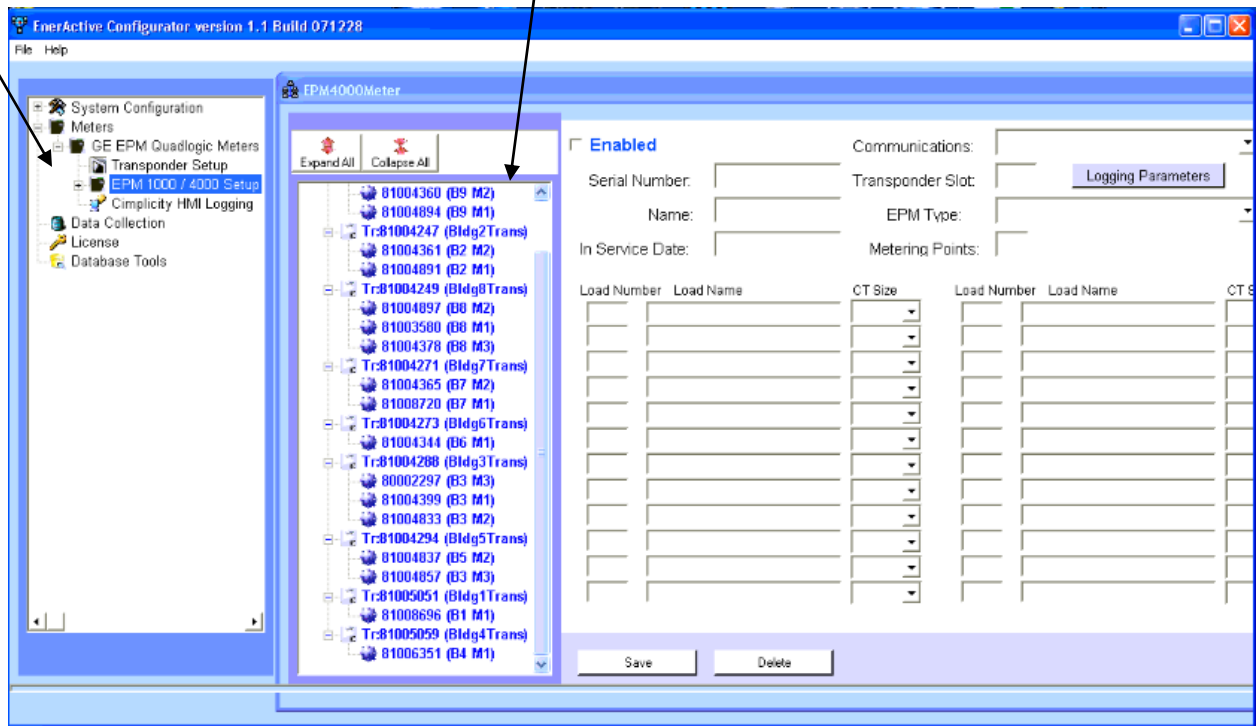
Find the Eneractive Configurator desktop icon and double click the icon to open the application.



Step 2: Locating the Meter

The label or load name you wish to change is on a certain meter in the system. You will need to expand Meters, expand GE EPM Quadlogic Meters and Highlight EPM 1000 / 4000 Setup. This list of Meters will appear to the right.

Locate the appropriate meter from the list that you want to make the change for.



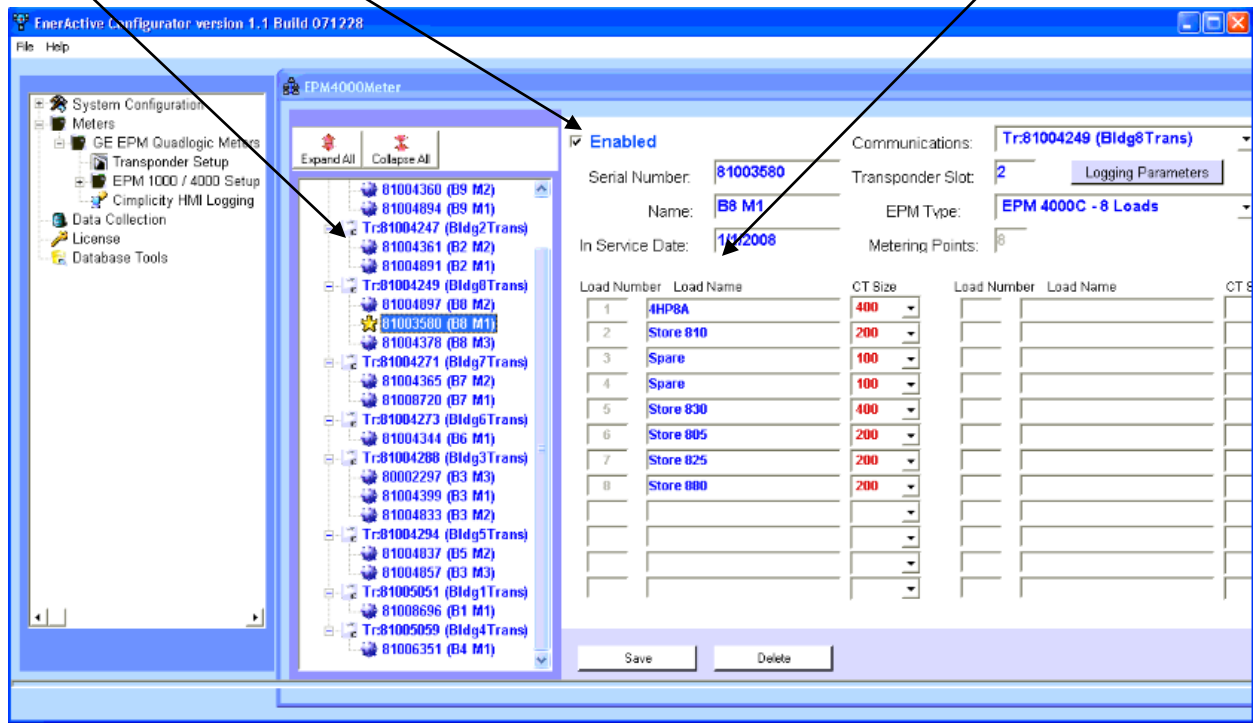


Step 3: Changing the Meter

After you have located the appropriate Meter, the next step is to select the Meter and the loads will appear to the right. You can now modify the load you wish to change by simply click in the box and modifying the text.

You must make sure that no other parameters are changed while working in the Eneractive Configurator application. The other parameters were configured during startup so that the system in place corresponds correctly with the Eneractive Software on the PC.

The Enabled button should always be checked on an active meter





Step 4: Saving the Changes

When you have finished modifying the load / loads you wanted to change, you can click on the Save button on the bottom of the Meter Configuration screen. It will prompt you: Are you sure you want to save the modified meter xxxxxxxx (This should be the 8 digit Serial Number of the meter you are making the changes to).

You can now click the OK button and your changes will take effect immediately.

